

48A Stile Common Road,  
Primrose Hill HD4 6DE

PCM  
£1,700 PCM

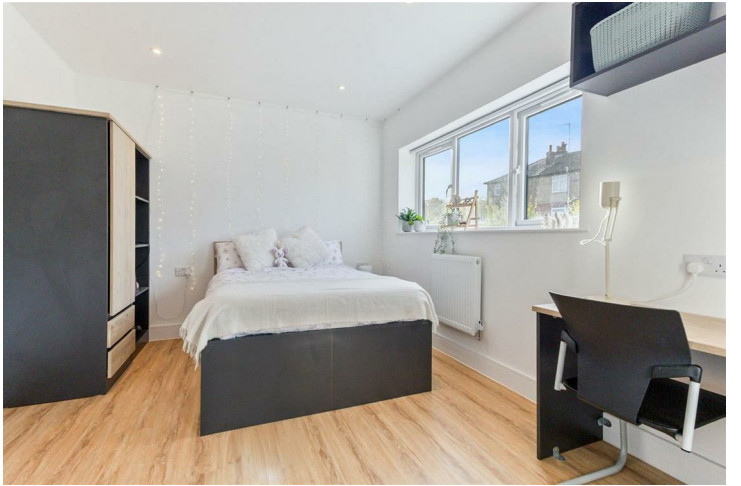


THIS MODERN AND GENEROUSLY SIZED FIVE BEDROOM, ALL WITH EN-SUITES, SEMI DETACHED PROPERTY BOASTS OPEN PLAN LIVING SPACE, OFF ROAD PARKING, A REAR GARDEN AND FAR REACHING VIEWS.

AVAILABLE FROM THE BEGINNING JULY 2025 / UN FURNISHED / NO SMOKERS / BOND £1960 / ENERGY RATING B / COUNCIL TAX BAND D.

PAISLEY  
PROPERTIES







## **NEW LETTINGS INFORMATION**

All measurements are approximate and quoted in metric with imperial equivalents and for general guidance only and whilst every attempt has been made to ensure accuracy, they must not be relied on. We advise you take your own measurements prior to ordering any fixtures, fittings or furnishings. Internal photographs are produced for general information and it must not be inferred that any item shown is included with the property. You are advised to check availability and book a viewing appointment prior to travelling to view.

Some of our properties do accept pets and DSS but you are advised to check this before arranging any viewings. In some cases landlords may request a higher monthly rent to allow for pets. We do not allow smoking in any of our properties.

As of the 1st June 2019 there will be no referencing fees for tenants but we do ask that you are committed to renting the property before applying as fees will be incurred by the landlord and Paisley Properties in order to carry out thorough credit referencing.

We may ask for a holding deposit equivalent to approximately 1 weeks rent, terms and condition apply and will be provided upon application.

We always charge a deposit which is no more than the equivalent of five weeks rent. Please check the individual property for deposit amounts. All our deposits are held in a separate insured account held by the Deposit Protection Scheme (DPS).

## **PAISLEY PROPERTIES**

We are available to do appointments up until 8pm Monday to Friday and up until 4pm Saturday and Sunday so please contact the office if you would like to arrange a viewing. We also offer a competitive sales and letting service, please contact us if you would like to arrange an appointment to discuss marketing your property through Paisley, we would love to help.

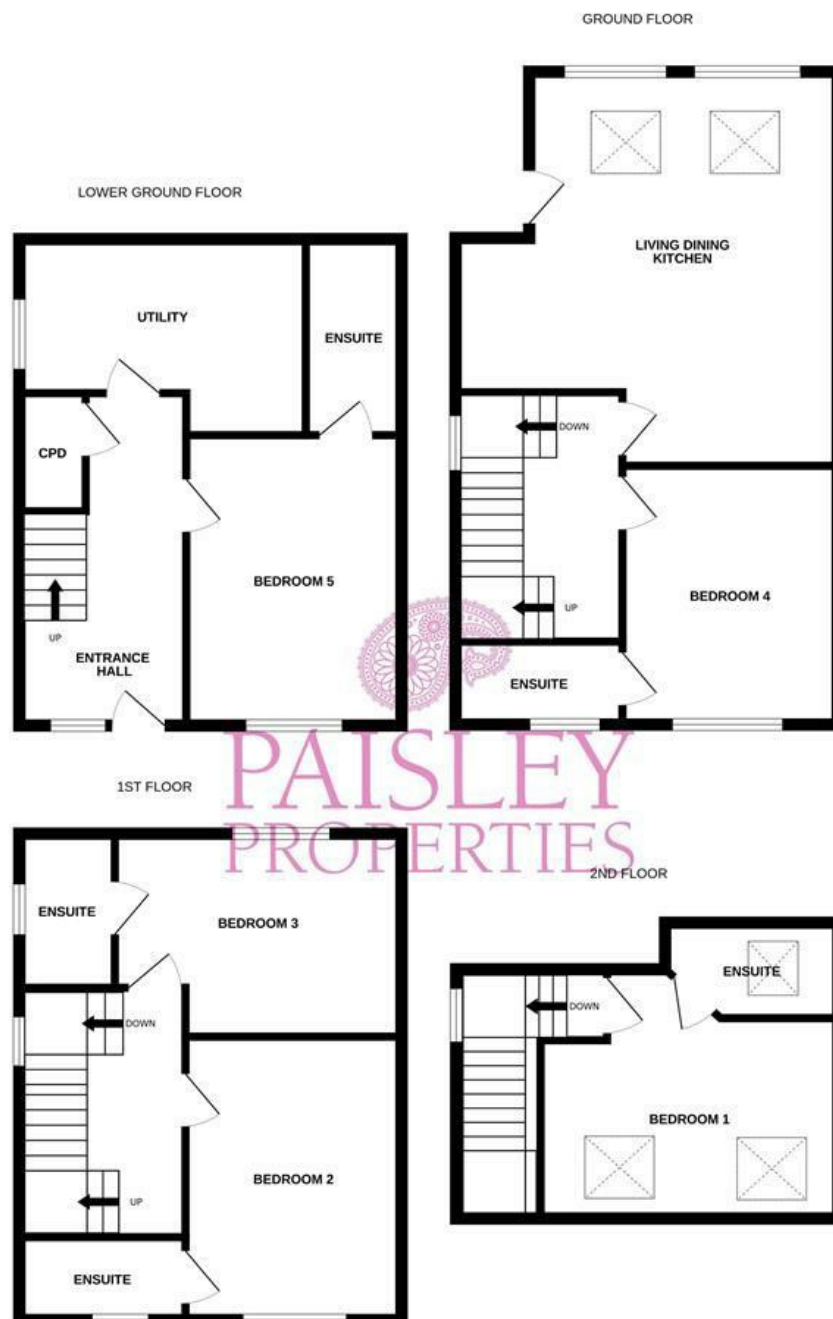
## **PAISLEY MORTGAGES**

Mandy Weatherhead at our sister company, Paisley Mortgages, is available to offer clear, honest whole of market mortgage advice. We also run a first time buyer academy to help you prepare in advance for your first mortgage, home-mover and re-mortgage advice. If you would like to speak to Mandy, please contact us on 01484 444188 / 07534 847380 / [mandy@paisleymortgages.co.uk](mailto:mandy@paisleymortgages.co.uk) to arrange an appointment.

\*Your home may be repossessed if you do not keep up repayments on your mortgage. \*

## **PAISLEY SURVEYORS**

We work alongside Michael Kelly at Paisley Surveyors, who can assist you with any survey requirements on your purchase. We offer 3 levels of survey and can be contacted on 01484 501072 / [office@paisley-surveyors.co.uk](mailto:office@paisley-surveyors.co.uk) for a free, no obligation quote or for more information.



Whilst every attempt has been made to ensure the accuracy of the floorplan contained here, measurements of doors, windows, rooms and any other items are approximate and no responsibility is taken for any error, omission or mis-statement. This plan is for illustrative purposes only and should be used as such by any prospective purchaser. The services, systems and appliances shown have not been tested and no guarantee as to their operability or efficiency can be given.  
Made with Metropix ©2025

Energy Efficiency Rating		Current	Potential
Very energy efficient - lower running costs			
(92 plus) A			
(81-91) B			
(69-80) C			
(55-68) D			
(39-54) E			
(21-38) F			
(1-20) G			
Not energy efficient - higher running costs			
England & Wales		85	92
EU Directive 2002/91/EC			

Environmental Impact (CO <sub>2</sub> ) Rating		Current	Potential
Very environmentally friendly - lower CO <sub>2</sub> emissions			
(92 plus) A			
(81-91) B			
(69-80) C			
(55-68) D			
(39-54) E			
(21-38) F			
(1-20) G			
Not environmentally friendly - higher CO <sub>2</sub> emissions			
England & Wales			
EU Directive 2002/91/EC			

[www.paisleyproperties.co.uk](http://www.paisleyproperties.co.uk)

Skelmanthorpe Office:  
17 Commercial Road,  
Skelmanthorpe, HD8 9DA  
t: 01484 443893

Almondbury Office:  
75-77 Northgate,  
Almondbury, HD5 8RX  
t: 01484 443922

Mapplewell Office:  
4 Blacker Road,  
Mapplewell, S75 6BW  
t: 01226 395404

PAISLEY  
PROPERTIES